

QUIKBOX™ PRODUCT GUIDE

Reinforcement continuity strips for
engineered connections





QuikBox™

Safe and Secure

SRG Global has developed QuikBox™, our own reinforcement continuity strip product, more commonly known in the construction sector as 'pull out boxes'.

These are a quick and safe way to achieve a high-quality reinforcement connection across a reinforced concrete joint.

QUIKBOX SYSTEM

SRG Global's QuikBox System is an Australian made, prefabricated, fully sealed system designed for a quick and simple method of allowing continuity of reinforcement at construction joints in concrete.

The QuikBox system consists of a dimpled galvanised steel case for effective concrete bond, a galvanised steel lid, 500 grade ACRS approved pre-bent reinforcing in the required configuration and polystyrene end caps. QuikBox is a fully taped and sealed system to prevent concrete ingress.

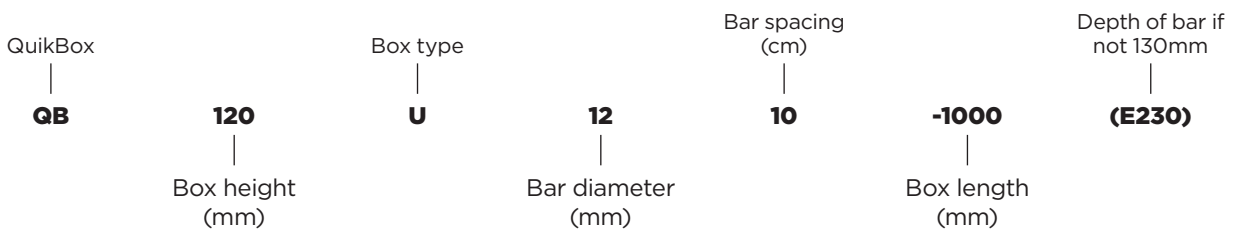
The QuikBox system can be fixed to the formwork or tied into the reinforcing at the required location. Once ready, the concrete is placed. When the formwork is struck the lid can be easily removed exposing the reinforcing bars inside the system. These bars are then bent out and ready for lapping with the main reinforcing. The dimpled galvanised steel case is left embedded in the concrete and provide a shear key between the first and second concrete sections.

QuikBox is manufactured with grade 500N ACRS approved reinforcing bars with minimum yield of 500MPa which meets the AS/NZS 4671:2001 requirements. All bars have a minimum uniform elongation A.gt 5% and are bent to comply with AS/NZS 4671:2001.

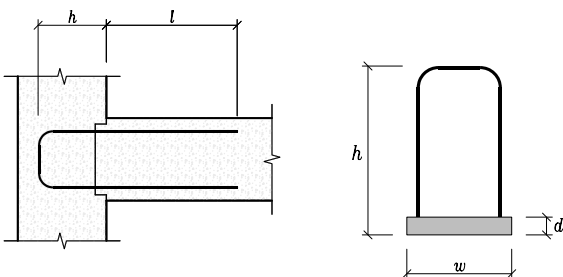
QuikBox can be used in a wide range of applications of construction joints commonly including:

- Jumpforms - wall to floor connection
- Floor slab to floor slab - crane or other penetrations
- Wall to wall - external to internal walls
- Wall to slab - core or lift core connection
- Wall to corbel - conventionally formed
- Precast concrete elements to wall / slab - insitu concreting
- Wall to stairwell / landings

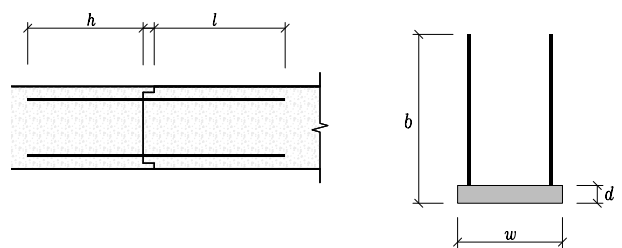
Description of QuikBox Product Code



QuikBox U - Double Row U Bars - N12 Bar



QuikBox AA - Double Row Straight Bars - N12 Bar





Product Code	Box Length	Box Height	Bar Embedment	Bar Spacing	Leg Length	Box Depth	Min Wall Thickness	Cog Length
	mm	(w) mm	(h) h mm	mm	(l) mm	(d) mm	mm	(b) mm
QB120U1210-1000	1000	120	130	100	450	36	180	100
QB120U1215-1000	1000	120	130	150	450	36	180	100
QB120U1220-1000	1000	120	130	200	450	36	180	100
QB120U1225-1000	1000	120	130	250	450	36	180	100
QB120U1230-1000	1000	120	130	300	450	36	180	100
QB150U1210-1000	1000	150	130	100	450	36	180	120
QB150U1215-1000	1000	150	130	150	450	36	180	120
QB150U1220-1000	1000	150	130	200	450	36	180	120
QB150U1225-1000	1000	150	130	250	450	36	180	120
QB150U1230-1000	1000	150	130	300	450	36	180	120
QB190U1210-1000	1000	190	130	100	450	36	180	150
QB190U1215-1000	1000	190	130	150	450	36	180	150
QB190U1220-1000	1000	190	130	200	450	36	180	150
QB190U1225-1000	1000	190	130	250	450	36	180	150
QB190U1230-1000	1000	190	130	300	450	36	180	150
QB220U1210-1000	1000	220	130	100	450	36	180	180
QB220U1215-1000	1000	220	130	150	450	36	180	180
QB220U1220-1000	1000	220	130	200	450	36	180	180
QB220U1225-1000	1000	220	130	250	450	36	180	180
QB220U1230-1000	1000	220	130	300	450	36	180	180

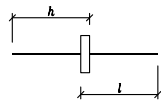
Alternate boxes available

Many applications require special sizes or spacing of reinforcing to suit specific requirements. QuikBox can be manufactured according to these requirements

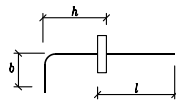
and delivered to site with no additional work required. Alternate common boxes shown below, other configurations available on request.

Other systems for continuity of reinforcement

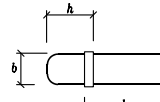
LENTON couplers - single with nailing plate or coupler boxes
 QuikAnchor™ - threaded anchor system to reduce bar congestion.



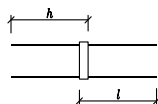
TYPE A (STRAIGHT BAR)



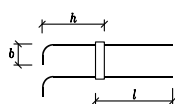
TYPE L (ANGLE)



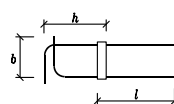
TYPE U (UBAR)



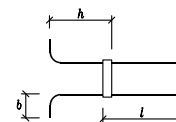
TYPE AA (DOUBLE STRAIGHT BAR)



TYPE LL (DOUBLE ANGLE)



TYPE LJ (DOUBLE ANGLE)



TYPE JL (DOUBLE ANGLE)



Our global footprint

The information and details contained in this brochure are indicative and intended for marketing purposes only. They should not be relied upon as being complete and accurate. Prospective purchasers should make and rely on their own enquiries and a competent, experienced and qualified professional should always be consulted prior to using the product. SRG Global, its employees, agents and other representatives do not accept any responsibility or liability for any direct, indirect, consequential or other loss or damage suffered by any person arising out of or in connection with any reliance on the enclosed information. SRG reserves the right to amend or modify any information contained herein at any time and without notice. Any subsequent sale will be based on our terms and conditions.

srgglobal.com.au

CORPORATE HEAD OFFICE
Level 1, 338 Barker Rd
Subiaco WA 6008
+61 8 9267 5400
info@srgglobal.com.au

QLD
642 Old Gympie Rd
Narangba QLD 4504
+61 7 3888 6655

WA
5 Riversdale Rd
Welshpool WA 6106
+61 8 9267 5400

VIC
2/290 Salmon St
Port Melbourne VIC 3207
+61 3 9296 8100

NSW
S3/L1 75 Carnarvon St
Silverwater NSW 2128
+61 2 8767 6200

**MAKING
THE
COMPLEX
SIMPLE**