



PolyTile®



The need for an instant installation of tactile indicators shouldn't mean a compromise in safety. CTA PolyTile® self-adhesive tactile indicator tiles can be laid in minutes but still provide very high adherence to building safety requirements, and like all CTA products, they are built to last.

PolyTile® tactile guidance products are designed with a unique purpose: they are simple peel and stick tiles which can be applied to almost any internal walkway, stairs or ramps to provide immediate compliance to the Australian Standards AS1428

They are light weight, simple to install - just peel and stick, and provide builders the most effective and quick option for code compliance.

PolyTile® is manufactured from a UV resistant, New Generation Engineering grade polymer that exhibits long life, extreme tensile strength and the highest abrasion/wear resistance of any other polymer. PolyTile® is easy and simple to install and does not compromise durability. Will not discolour, crack or degrade over time.

KEY FEATURES

- DIY peel and stick installation; no technical skills required
- Available in both hazard (stud) and directional (rib) profiles
- Ultimate colour stability and retention of physical properties
- Strong PSA adhesive resists movement
- Available in seven colours: terracotta, yellow, daffodil, black, ivory, grey & sky blue
- AS4586 P5 slip resistance rating
- Highly cost effective
- Complies with all AS1428 tactile product design requirements

POLYTILE® TGSIs USING NEW GENERATION ENGINEERING GRADE POLYMER

The demands made on plastic TGSIs, particularly those destined for public transport applications where they are subjected to extreme traffic conditions, are growing ever more rigorous.

For these applications, we make use of New Generation Engineering Grade Polymers, drawing on their excellent properties, such as: abrasion resistance, flexibility, chemical resistance and extreme UV stability.

STANDARD POLYMER

With standard plastics, UV exposure will result in degradation which results in a deepening colour changing to yellow and then amber. In prolonged exposure, components will turn a dark brown, resulting in loss of all mechanical properties including a marked reduction in tensile strength and impact resistance, leading to embrittlement. This limits their use in exterior applications to non-cosmetic parts with a limited life expectancy.

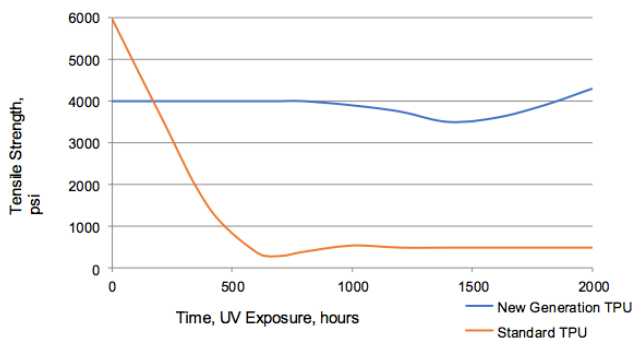
Heavily UV stabilized polymers can also be used where a colour shift/fading is not apparent such as in black or yellow components.

NEW GENERATION ENGINEERING GRADE POLYMER

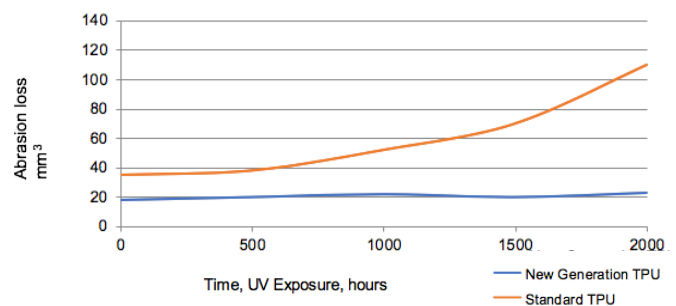
New Generation Engineering Grade Polymers, have no colour limitations and products maintain their excellent physical properties. This is very important when considering the manufacture of TGSIs.

In order to meet the luminance contrast requirements of the Australian Standards AS1428, the market demands TGSIs remain brightly coloured over their extended life expectancy, which in most circumstances is in excess of 10 years.

The following graphs highlight the stability of New Generation Polymers, comparing with the drop off in physical properties of Standard Polymers.



Graph 1: Illustrates Tensile Strength changes due to accelerated UV exposure



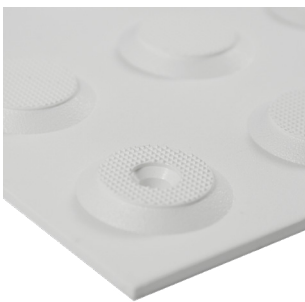
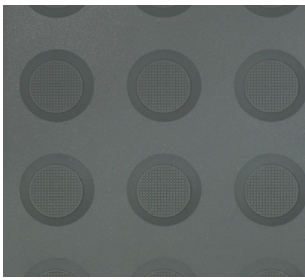
Graph 2: Illustrates Abrasion loss due to accelerated UV exposure

An Accelerated Weathering Test program on Tactile Indicators has revealed that TGSIs manufactured in New Generation Polymers show no colour change, whilst most competitor products experienced significant colour change.

PolyTile® TGSIs provide excellent weathering and UV stability and more importantly comply with the Australian Standards for the life expectancy of the product.

CALL CTA ON 1300 282 282
TO ARRANGE A MEETING WITH A SALES CONSULTANT
 VICTORIA | NEW SOUTH WALES | QUEENSLAND | WESTERN AUSTRALIA

CTA 
 WWW.CTAGROUP.COM.AU



Screw Down Option

PRODUCT DATA

Dimensions	300 x 300 x 3+5
Product Weight	420g
Packaging Size	300 x 300 x 300
Quantity in Package	36 (5.4 LM)
Package Weight	15.2 kg
AS1428 Compliant	Yes
AS4586 (Hazard)	73 / P5
AS4586 (Directional)	73 / P5
NCC Compliant	Yes
Materials	Polymer
UV Stable	Yes
Warranty	2 Years
Life Expectancy	10 years
Indoor Use	Yes
Outdoor Use	No*

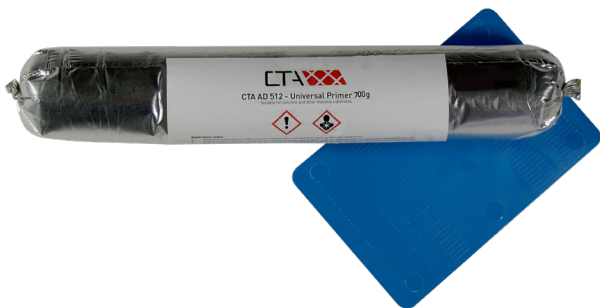
* For external applications use the screw down option

APPLICATIONS

Suitable for high traffic office buildings, apartments, transport and educational facilities. For external applications use the screw down option.

PRODUCT OPTIONS

COLOUR	HAZARD	SCREW DOWN HAZARD	DIRECTIONAL	SCREW DOWN DIRECTIONAL
Ivory	PTH-108	PTHRAT-108	PTD-108	PTDRAT-108
Yellow	PTH-112	PTHRAT-112	PTD-112	PTDRAT-112
Daffodil	PTH-113	PTHRAT-113	PTD-113	PTDRAT-113
Grey	PTH-155	PTHRAT-155	PTD-155	PTDRAT-155
Black	PTH-160	PTHRAT-160	PTD-160	PTDRAT-160
Sky Blue	PTH-130	PTHRAT-130	PTD-130	PTDRAT-130
Terracotta	PTH-124	PTHRAT-124	PTD-124	PTDRAT-124



POLYTILE PRIMER

PRIMER	PRODUCT CODE
PolyTile® Primer	PTHS-PRIM

MATERIAL

New generation engineering grade polymer.

DIMENSIONS

PolyTile® is manufactured in a standard tile size of 300x300mm with a square edge to ensure a tight butt joint with minimal gaps. 3mm Peel and Stick base with AS1428 compliant 5mm stud height.

INSTALLATION METHOD

PolyTile® Tactiles may be laid over most substrates in the same way as many other rubber or vinyl tiles. Lay out the area (ensuring 300mm from change of gradient) using a string line. Dry lay the tiles to ensure they are in the correct place and lie flat on the substrate. For porous substrates such as concrete or asphalt it is recommended to apply the PolyTile® Primer to the substrate before installing the tiles. Peel the backing sheet from the tile and apply to the surface, following the string lines, once all the tiles have been laid, press down firmly so there is a good bond to the surface. Screw down option requires masonry screws. See Product Installation sheet for comprehensive instructions.

COMPLIANCE

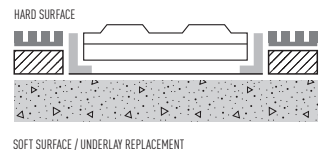
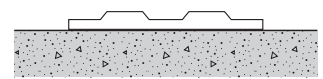
All CTA products conform with the requirements of the Australian standards and are tested by a NATA certified laboratory. Please consult with CTA for relevant test reports:

- AS1428:2009 Design for access and mobility
- AS4586:2013 Slip resistance classifications for new pedestrian surface materials
- NCC - National Construction Codes

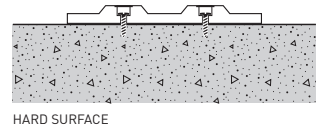
CTA INSTALLERS

CTA's accredited installers are available to do the installation work for you – with short turnaround times and guaranteed workmanship. Our installation team is the largest and most experienced in the nation, so you can rest assured you are in safe hands.

INSTALLATION



SCREW DOWN



COLOURS



WARRANTY

CTA provides a comprehensive warranty, in accordance with our published warranty statement which can be viewed on www.ctagroup.com.au

CTA COMPLETE CARE MAINTENANCE

Asset owners have a Duty of Care responsibility to maintain access product within design performance parameters. CTA offers a fully integrated maintenance program which includes regular scheduled maintenance and replacement of worn components where necessary. Please contact your CTA representative for information on our "Complete Care Program."

LUMINANCE CONTRAST

Please view the CTA Luminance Brochure for details or contact your CTA representative to discuss or request an onsite luminosity test.

CALL CTA ON 1300 282 282
TO ARRANGE A MEETING WITH A SALES CONSULTANT

VICTORIA | NEW SOUTH WALES | QUEENSLAND | WESTERN AUSTRALIA

